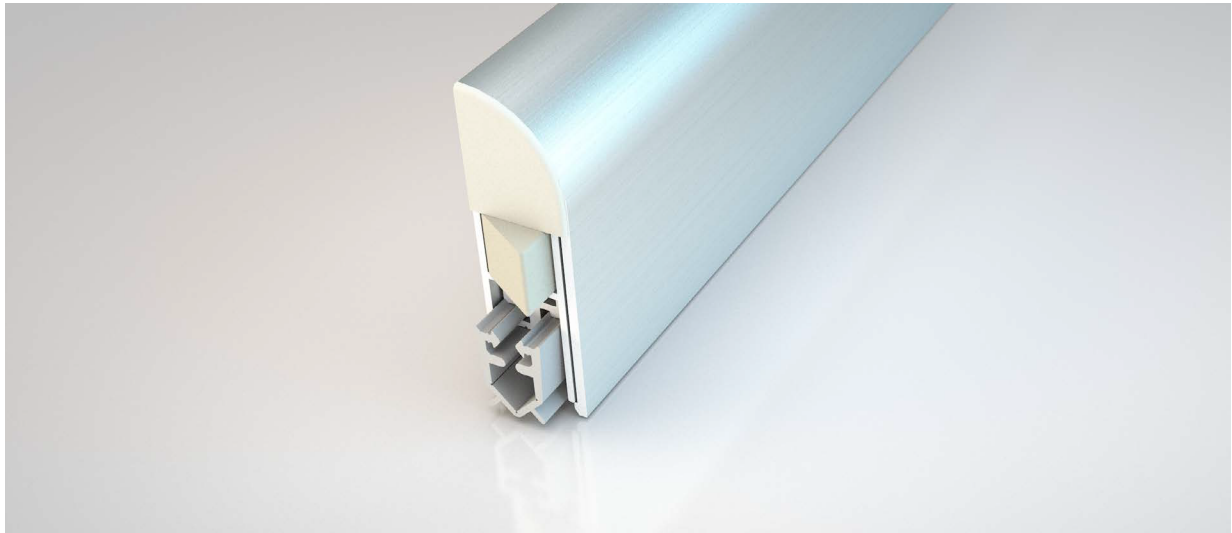


## NOR820

NORSOUND BY NORSEAL



### Application

Bottom edge of acoustic timber or metal doorsets

### Fixing

Screw-fixed

### Performance

Meets smoke requirements BS 8214  
Acoustically tested in accordance with  
BS EN ISO 10140-2

### Material

Aluminium (Satin Silver), PVC gasket (Grey)

### Lengths (mm)

400, 500, 600, 700, 800, 900, 1000, 1100, 1200

### Cutback (mm) / Maximum gap coverage (mm)

125, 130 (400 length only) / 12

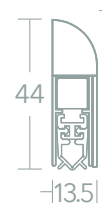
### Actuation

Single

### Order codes

**NOR820 + Length + /S** eg. NOR820400/S (400mm)

### Dimensions



Installation of the NOR820 drop seal provides smoke and acoustic performance without the removal of timber from the door. Fitting of the seal is not detrimental to the doors performance for fire resistance.

Door manufacturers such as Falcon Strebord, Halspan, Flamebreak etc advise: Surface mounted automatic drop seals may be used where the fitting of these does not require the removal of any core material.

 5 Regents Drive  
Prudhoe  
Northumberland  
NE42 6PX



[norseal.co.uk](http://norseal.co.uk)



[sales@norseal.co.uk](mailto:sales@norseal.co.uk)



01661 830088

Registered in Companies House Cardiff No. 04317595 VAT Reg. No. 733 9466 08